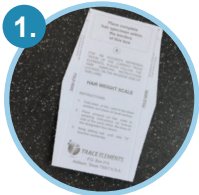


Your kit contains:



1 hair weight scale



1 paper envelope



1 Sample dispatch note



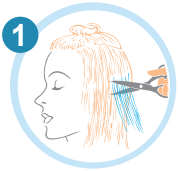
1 grey envelope



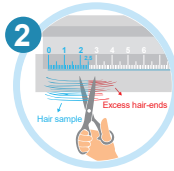
Attention: Send in scalp hair only! Pubic hair or other body hair are not suitable for analysis. If you send in hair other than scalp hair, we cannot assume any responsibility for the interpretation of the laboratory results or the costs of retesting.

General information:

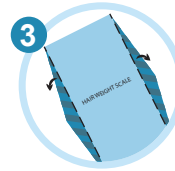
- ❗ Hair to be collected should be untreated, i.e. not permed, dyed or bleached. If all of the hair has been chemically treated, wait until sufficient new virgin growth has emerged to allow collection.
- ❗ The hair should be free of oils/hair creams etc. when you collect the sample.
- ❗ Preferably use hair from the "backside" of your head.
- ❗ The length of the collected hair should not exceed one and one-half inches.
- ❗ The weight requested for a hair specimen is 0.2 Gram. One full teaspoon should approximate the weight requirement.



- Use stainless steel scissors to cut the hair in small portions from at least four to five different locations of the scalp, as close to the skin as possible.



- The proximal portion (one and one-half inches closest to the root) should be retained and the excess discarded.



- In the testkit there is a blue hair weight scale, with which you can decide the right amount of hair.



- Place the scale on a flat surface. Place the hair on the side of the scale marked A until that side tips down. To be on the safe side, add one more strand of hair if possible.



- Write your name on the paper envelope, place the hair inside and close the envelope. Do not use plastic bags in place of the paper envelope. Do not use staples, paper clips, adhesive tape, aluminum foil or other material of any kind to seal, secure or wrap the hair envelope and/or the hair specimen contained within.



- Fill out all the information on the sample dispatch note. Don't forget to sign it! Put the paper envelope in the gray return envelope, together with the sample dispatch note and send it to our laboratory.