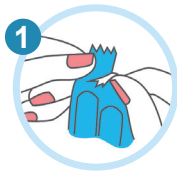
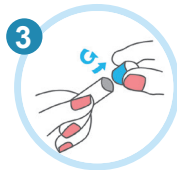


General information:

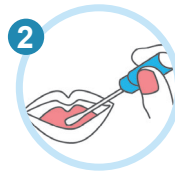
- ❗ Send in the mouth swab together with the stool sample. Separate samples cannot be analyzed.
- ❗ Do not use an antifungal or antibacterial mouthwash before doing the mouth.
- ❗ Do not eat unwashed fruit or vegetables starting from 3 days before sample collection.



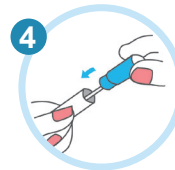
- ➔ Open packaging and remove sterile cotton swab, as well as tube with transport medium.



- ➔ Remove the cap at the upper end of the tube along the dashed line.



- ➔ Move the cotton swab back and forth on your tongue at least 5 times. Turn the stick slightly while doing so.

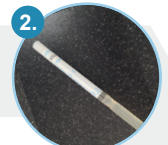


- ➔ Insert the cotton swab into the tube. Make sure the tube is tightly closed.

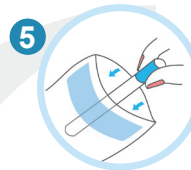
Consists of:



1. Sterile cotton swab



2. Tube with transport medium



- ➔ Put the mouth swab into the transparent protective bag together with the stool sample, insert it together with the sample dispatch note into the grey envelope and send everything to our laboratory.